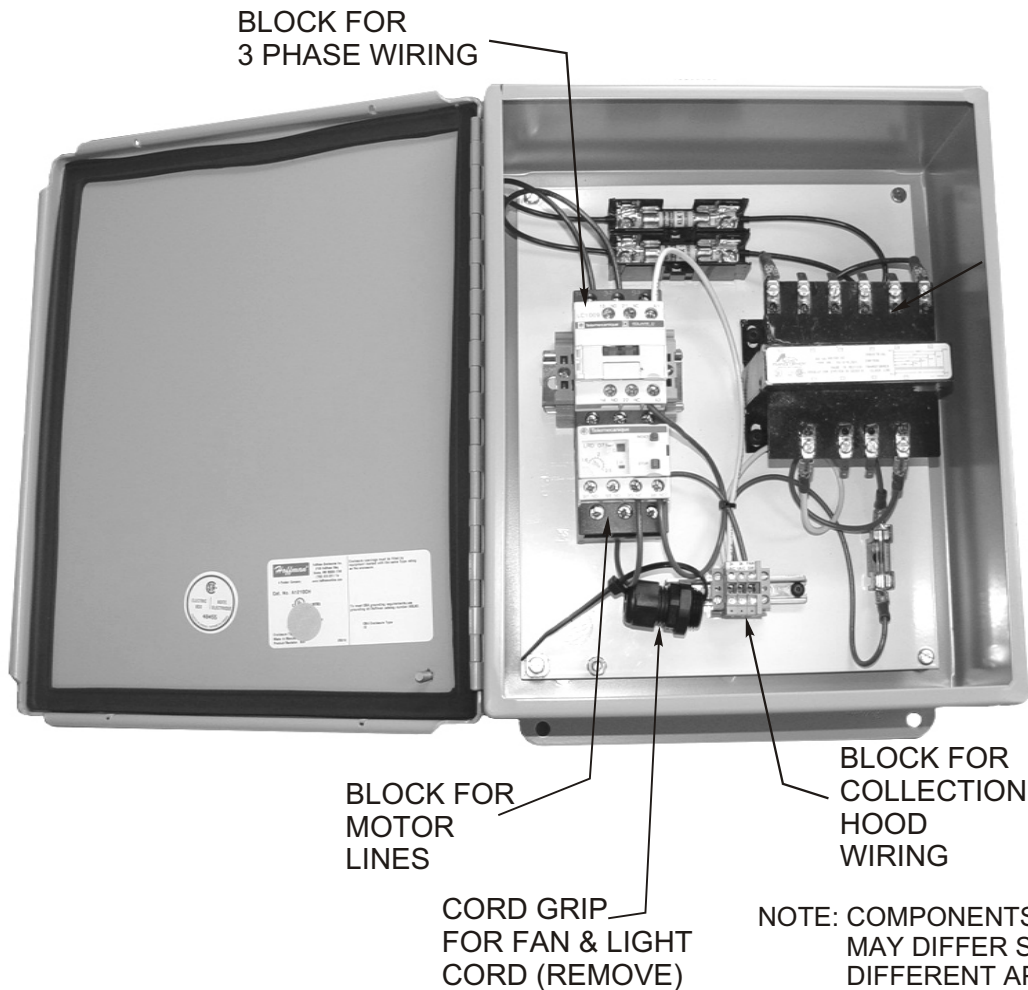


LKF LIGHT & FAN KIT FOR WXS WELDING EXHAUST ARMS

INSTRUCTIONS ARE FOR 24V LIGHT KIT AND 3 PHASE FAN MOTOR UP TO 1.5HP

The LFK Kit includes the Collector Hood with the wired Halogen Light, Fan & Light Switch and the electrical cord that will be wired to the control box. The control box includes connections for the fan, 3 phase power, and connection for the light and fan switch. A cord grip is also included for the cord coming from the collector hood. The electrical contractor shall provide the conduit and cord from the fan motor and from the 3 phase power source, and shall be responsible for mounting the control box and drilling the holes for bringing in the power to the control box. See instructions on page 2.



Due to the length of the cord from the collector hood, the control box should be mounted as close to the exhaust arm as possible. All internal wiring of the control box has been done at the factory. The wiring from the outside must be brought in from 3 sources which is the 3 phase power, the fan motor, and the collector hood light and fan switch. (Holes for wires to be drilled by contractor.)

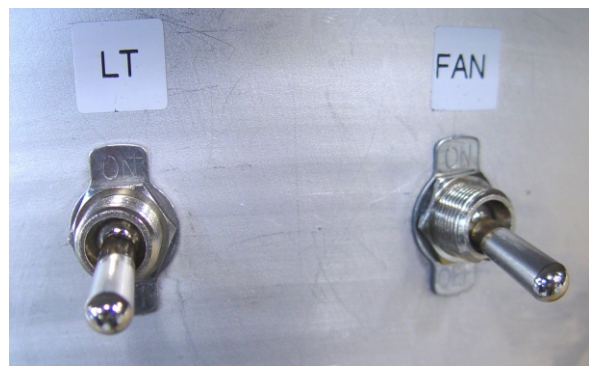
LIGHT KIT INSTALLATION (ALSO REFER TO O&M'S SUPPLIED WITH THE EXHAUST ARM)

1. Install control box in close proximity to welding arm. A wiring diagram is attached and is also included in the control box. Instructions are for connecting the three phase power(208-230/460 voltage) the fan motor, and the 24 volt halogen light.
2. The wiring from the lamp must run the complete length of the arm on the inside. After connecting the linkage sections together, and before connecting flexible hose to the solid duct, feed the wiring up the length of the arm. For arms with the light kit, the damper has a cutout where the wiring must be positioned and held in place with cable tie-downs (supplied) Open and close the damper to make sure the wiring does not touch any part of the damper. At the top of the arm the black collar below the swivel has a cutout hole where the wires from the light kit exit. The wire should be secured with the clip or grommet provided.
3. After installing the wiring for the light kit, continue with the installation of the exhaust arm, connecting the flexible duct with the tubular sections, and connect the collection hood to the end of the arm.



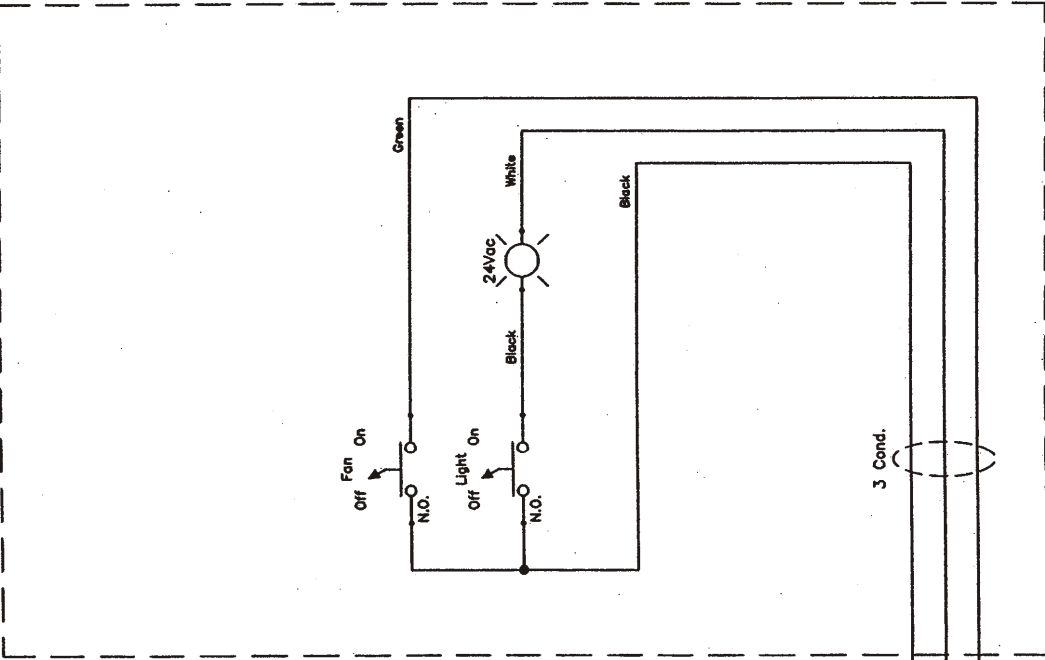
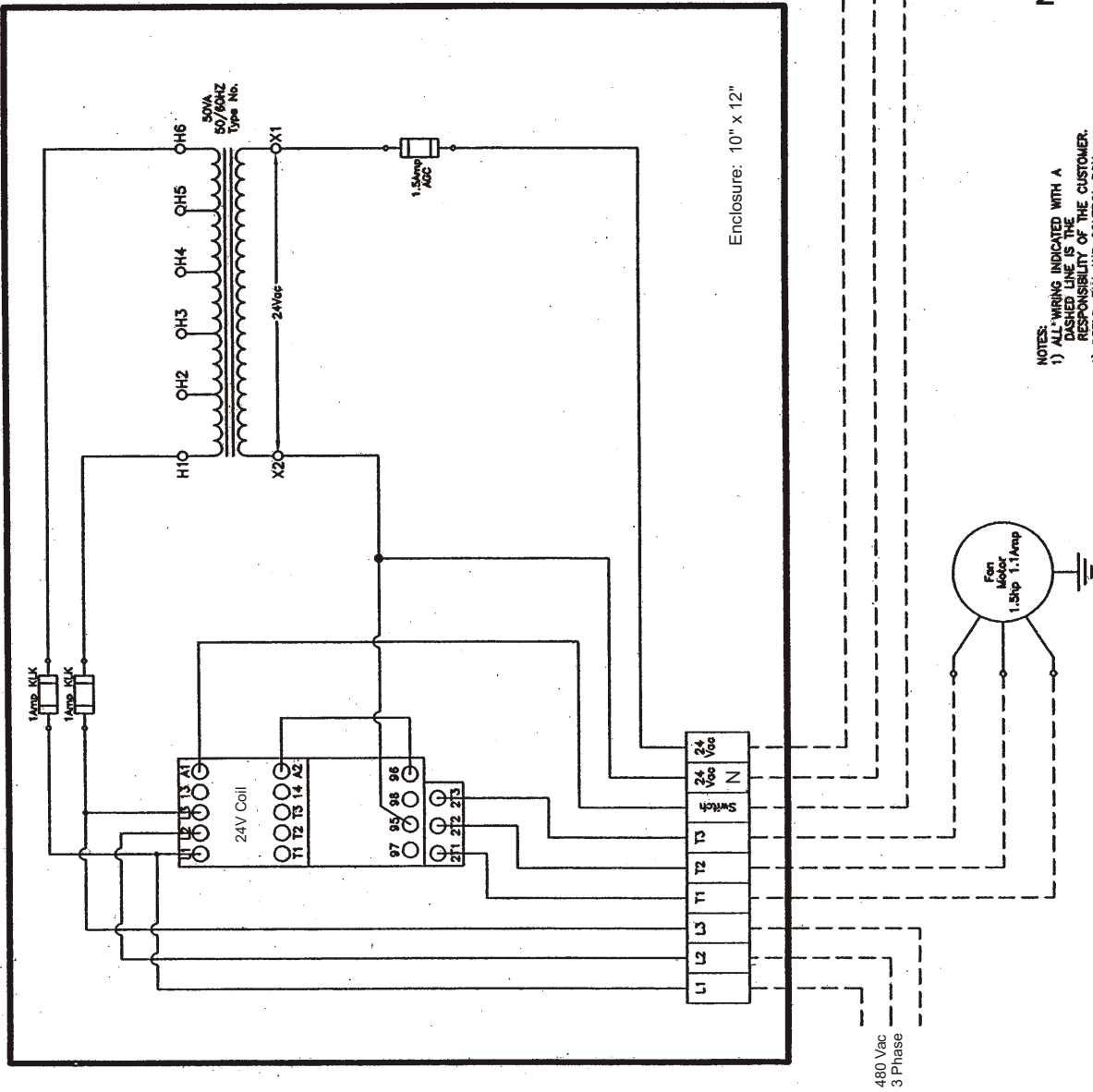
LIGHT IN HOOD

Light kit wiring must be fed through the cutout of the hand damper and secured to duct with cable tie downs.



SWITCHES MOUNTED IN BACK OF THE RECEPTOR

WIRING DIAGRAM IS FOR UNITS WITH THREE PHASE FAN - INCLUDES STARTER AND FAN OVERLOAD



NOTES:
 1) ALL WIRING INDICATED WITH A RESPECT TO THE CUSTOMER.
 2) REELS, FAN AND CONTROL BOX SHOULD HAVE A COMMON GROUND.

NOTE: Some projects require modification of the above diagram. A wiring diagram will be enclosed inside the control box and will reflect any modifications made. If the installer has any questions, please contact the factory. Any damage caused by improper wiring is not covered by factory warranty.

1225 Davis Road, Elgin, IL 60123 847/695-9000
 www.car-mon.com e-mail: info@car-mon.com

CAR-MON PRODUCTS, INC.